

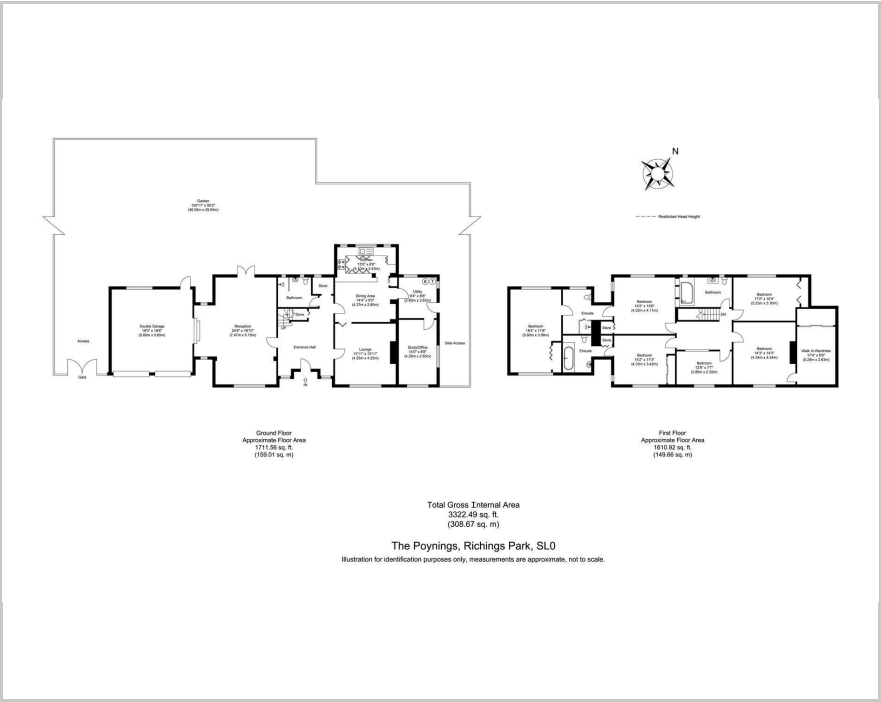


The Poynings, Iver, SL0 9DS

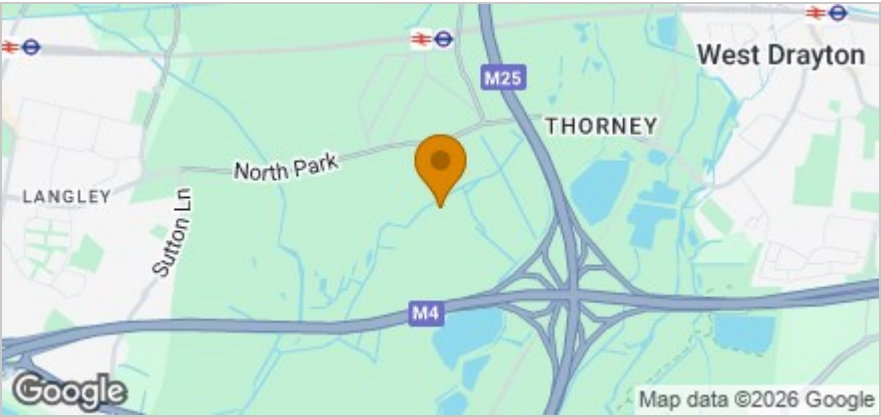
Asking Price £2,199,950



Floor Plan



Area Map



These particulars, whilst believed to be accurate are set out as a general outline only for guidance and do not constitute any part of an offer or contract. Intending purchasers should not rely on them as statements of representation of fact, but must satisfy themselves by inspection or otherwise as to their accuracy. No person in this firm's employment has the authority to make or give any representation or warranty in respect of the property.

1 The Crescent, Southall, Middlesex, UB1 1RE
Tel: 0208 571 0253 Email: info@parkfields-estates.com <https://www.parkfields-estates.com>

Accommodation

- BUILDING PLOT WITH PLANNING APPROVED FOR TWO DETACHED HOUSES (3056 SQFT EACH)
- PREMIER ROAD LOCATION OVERLOOKING GREEN FIELDS
- PLANNING REFERENCE: PL/24/1384/FA
- PLOT WIDTH MEASURING APPROX. 29M (95 FEET)
- REAR GARDEN OVER 46M (150 FEET)
- CURRENTLY SIX BEDROOMS
- GATED DRIVEWAY
- WALKING DISTANCE TO ELIZABETH LINE
- EXCELLENT OPPORTUNITY FOR DEVELOPERS OR END USER LOOKING FOR A PROJECT

Viewing

Please contact our Southall Office on 0208 571 0253 if you wish to arrange a viewing appointment for this property or require further information.

Energy Efficiency Graph

